



UNIVERSITY *of the*
WESTERN CAPE

UWC Convening Meeting Presentation 2024

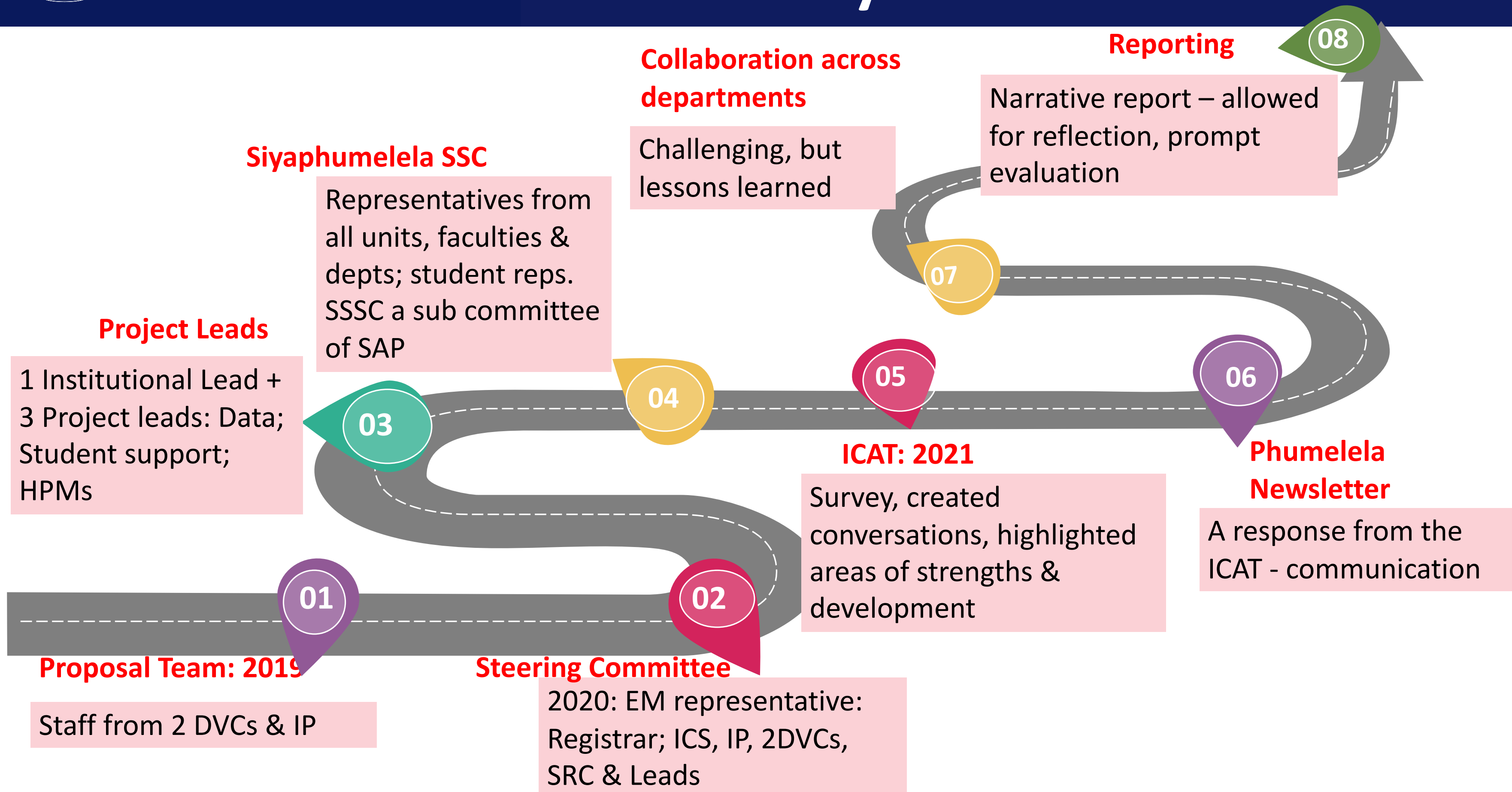
Prof Sue Pather & Ms Latitia Permall

Siyaphumelela Convening Meeting
12 April 2024





Actions Taken in Siyaphumelela 2.0 Journey





Siyaphumelea 2.0 Project Successes

Academic Advising	Highlight the success in providing personalized guidance to students, leading to improved academic performance.
Actioning UWC Student Retention and Success Framework	Identifying areas for collaboration, gaps and strengthening support.
Ethical Use of Data Policy:	How adhering to ethical standards in data usage contributed to the credibility and effectiveness of the interventions.
Data for Decision-making Courses (Data Literacy)	The data literacy programme empowered stakeholders to make informed decisions, leading to successful interventions.
Data-driven Insights that Led to Successes	Bi-weekly Engagement - how regular check-ins and engagement with students contributed to the success of the interventions.
Mental Health Policy and Implementation (WYSA)	The implementation of the mental health policy, its impact on student wellbeing, and the role of WYSA in this success.
Enhancing Student Agency & Sense of Belonging	Student Thermometer Survey First-Year Transition Programme
Engaging with Staff in identified High Priority Modules	Discussions & buy-in from faculties to support staff and students
Integrated Team - the role of a cross-disciplinary team in providing comprehensive support to students.	



Siyaphumelela 3.0 Focus

1. Addressing disparity in the success rates of male and female undergraduate students

- A marked difference between the performance of female and male students at the undergraduate level. This disparity has long-term implications for male students, their career paths and societal roles.
- A study will be conducted to better understand this phenomenon

2. Improving success rates in High Priority Modules

- Quantitative literacy gateway modules: Piloting of Carnegie Math Pathway (CMP) methodology in EMS quantitative literacy & skills modules
- Service Modules: Force on modules affected in all faculties: support to Students & Staff

3. Developing a coherent tracking and referral system to support student success work

- Integration of current systems
- UWC's data landscape already contains several systems to enable learner analytics. Lacks a holistic and formalised framework for activating early warning alerts (to students, academic & support staff) & nudging students towards interventions.





UNIVERSITY *of the*
WESTERN CAPE

Thank You.

Questions?