

World Access to Higher Education Initiative: International Examples of Student Success

Professor Graeme Atherton, Director National Education Opportunities Network (NEON) and World Access to Higher Education Network (WAHEN), University of West London









Accessibility|AA

[About](#) [News & Blogs](#) [Events](#) [Programmes](#) [Resources](#) [Contact](#)

[Join NEON](#)



Working to help widen access to Higher Education

NEON – the National Education Opportunities Network

• Rectangular Snip

What is NEON?

- Founded in 2012
- 150 organisations as members – over 100 universities.
- 80% of students going to higher education in England are from NEON members.
- Poorest students make up less than 10% of students in England.

Student Access and Success: The Global Picture

UNESCO's sustainable development goal 4.3

‘By 2030, ensure equal access for all women and men to affordable and quality technical, vocational and tertiary education, including university.’

Charting Equity in Higher Education: Drawing the Global Access Map

Graeme Atherton
Constantino Dumangane
Geoff Whitty

Open Ideas at Pearson

Sharing independent insights on the big
unanswered questions in education





SES + GENDER DATA



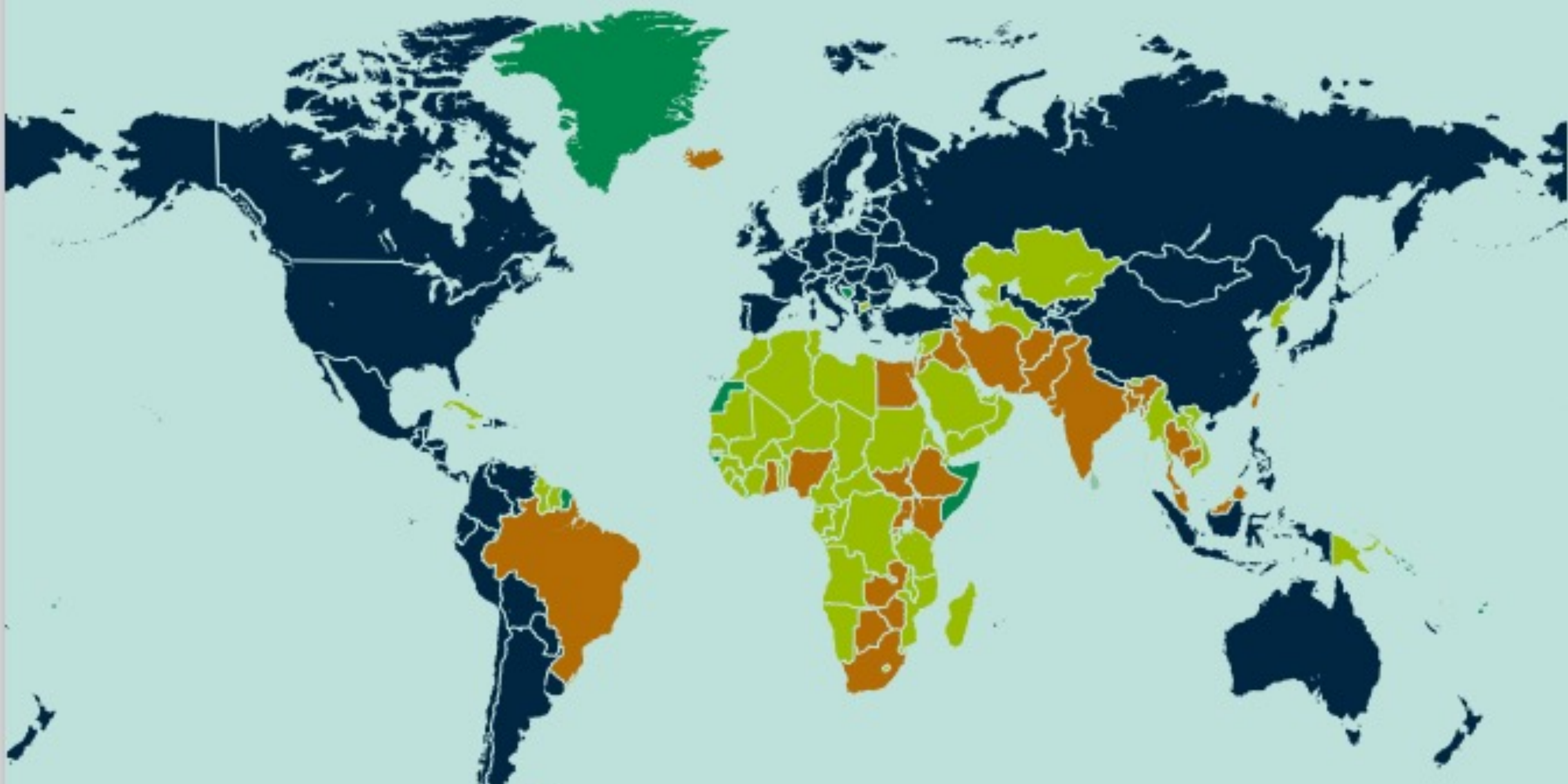
GENDER DATA



NO DATA



OTHER DATA



In 90% of the countries in the world, all where we had data, inequalities in access by student background characteristics.

Paper prepared for the
Global Education Monitoring Report

2020 GEM Report Fellowship

THE NON-STATE TERTIARY SECTOR AND INEQUALITIES IN TERTIARY ACCESS AND COMPLETION

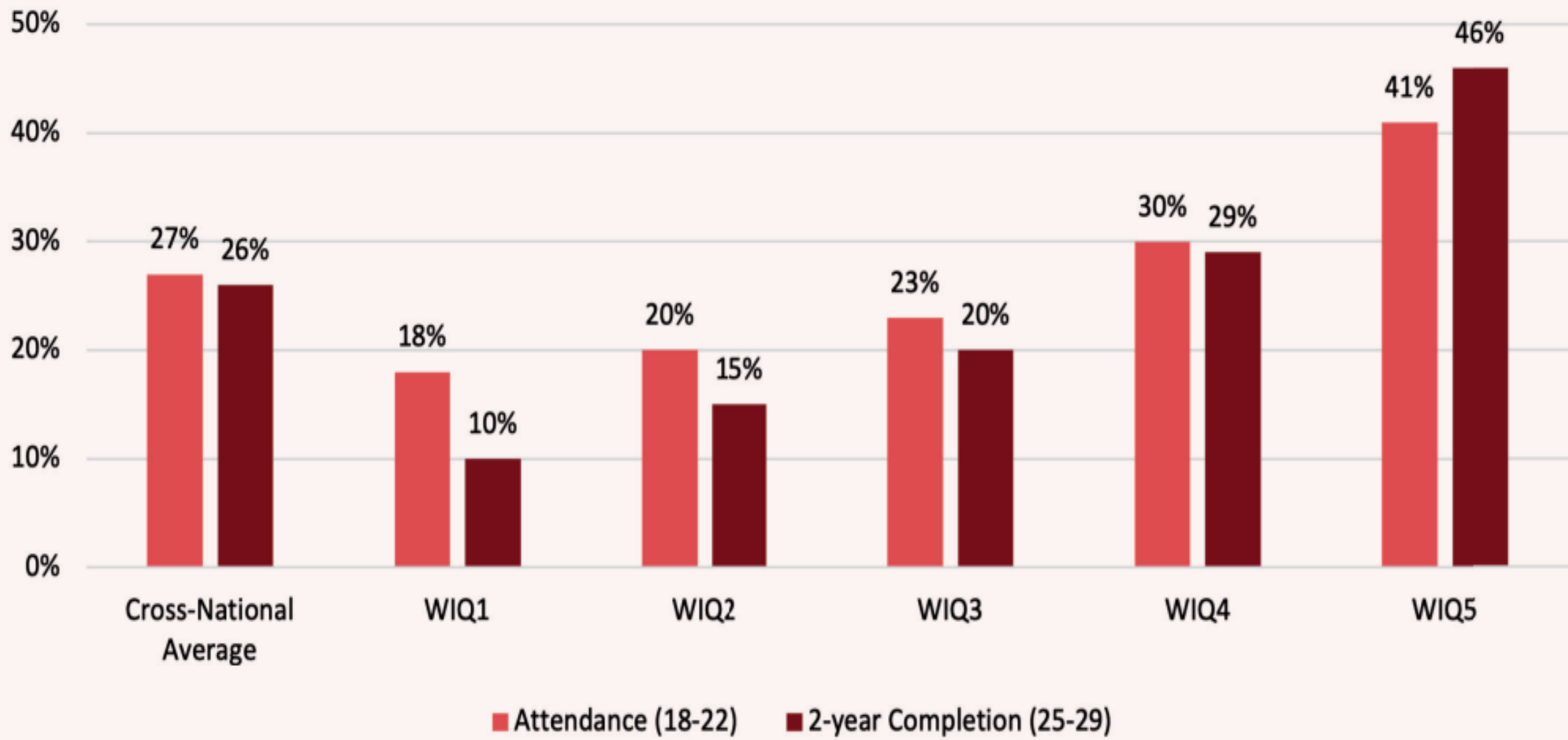
This paper was developed as part of the GEM Report Fellowship Programme. It has not been edited by the team. The views and opinions expressed in this paper are those of the author(s) and should not be attributed to the Global Education Monitoring Report or to UNESCO. The papers can be cited with the following reference: "Paper commissioned as part of the GEM Report Fellowship Programme in 2020". For further information, please contact gemreport@unesco.org.

ELIZABETH BUCKNER

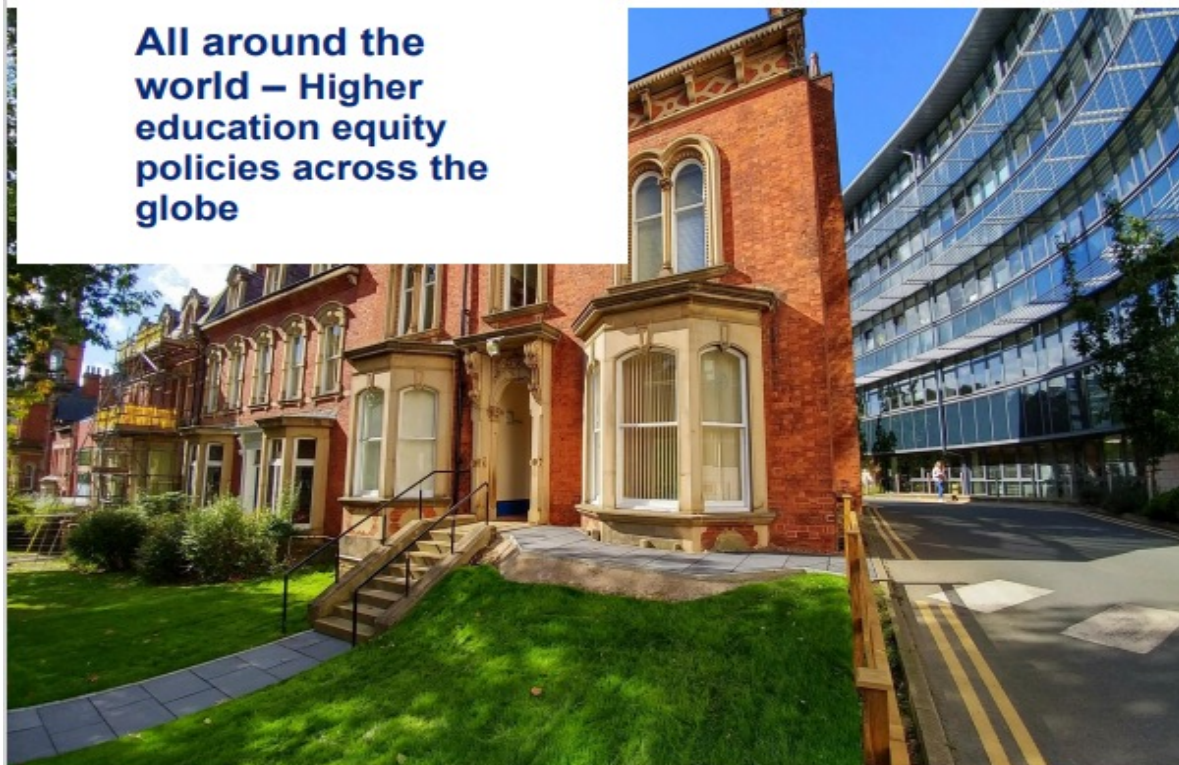


2020

‘Tertiary education attendance and completion is unequal. However, in almost every region in the world, inequalities in tertiary attendance and completion have declined over the past two decades’.



**All around the
world – Higher
education equity
policies across the
globe**



**Authored by: Jamil Salmi
Global Tertiary Education Expert**



November 2018

Global survey of 110 countries.

Less than 10% of countries have a higher education equity strategy and less than a third have equity participation of success targets.

NORTHERN CONSORTIUM

The equity crisis - higher education access and success to 2030



A report for the Northern Consortium
by Professor Graeme Atherton, Director
National Education Opportunities Network (NEON),
UK University of West London

Global survey of 300 universities/higher education organisations in 2022.

Around 90% of respondents thought that between now and 2025 participation would decrease, attainment fall, student drop out increase and progression to graduate employment decrease for equity groups.

Transforming Lives at the Institutional Level

Equity Promotion Initiatives
Across the World

Edited by Jamil Salmi



31 case studies including Siyaphumelela at UFS

Success Factors

- Individualized support and fostering sense of community
- Mainstreaming throughout the institution
- Continuity over the years
- Information systems- feedback - monitoring corrective actions – evaluation of impact.

Big Global issues....

- Data
- Political commitment
- The ‘university model’
- An equity backlash.....

What needs to be done?



WAHEN

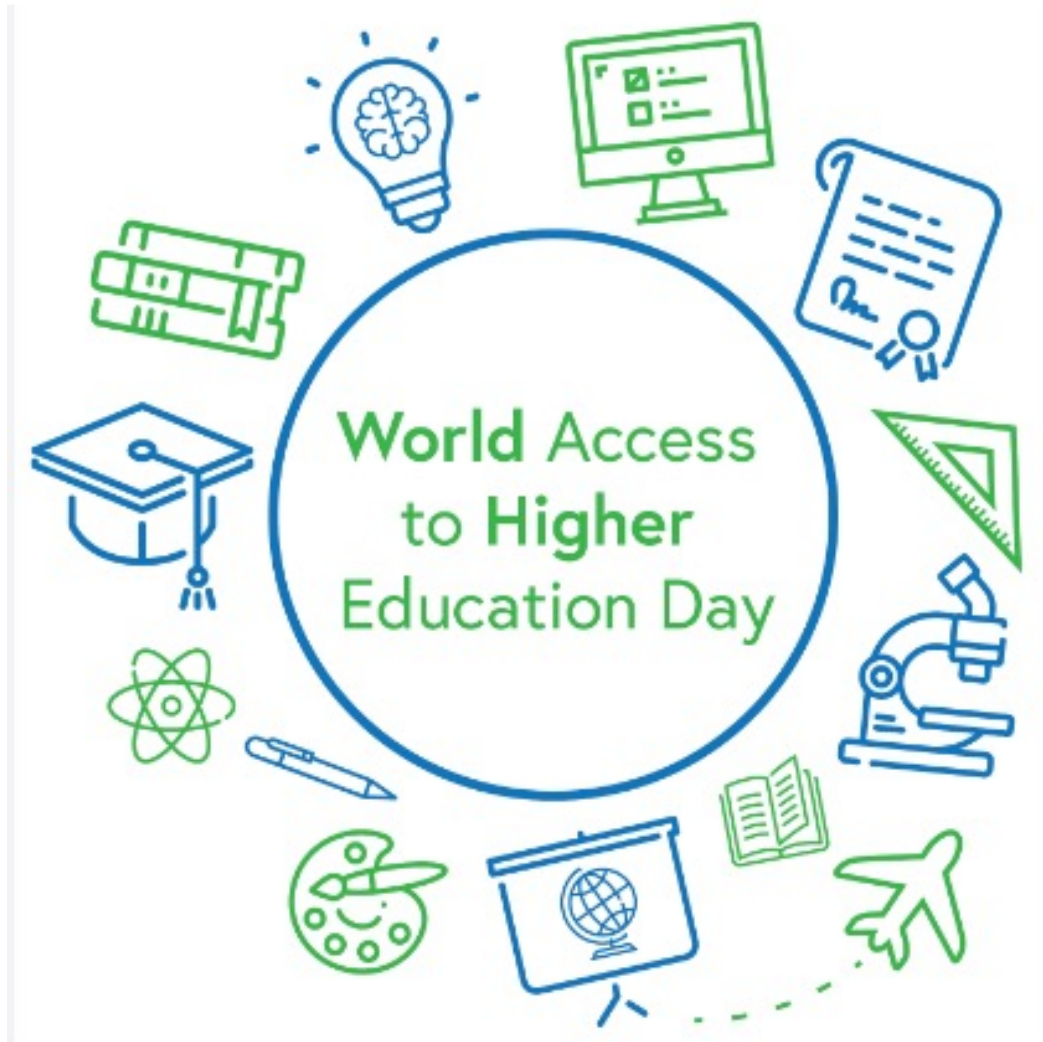
Why WAHEN?

Inequalities in access and success a **global** problem.

Add value to individual country activity/advocacy.

Create a global access and success community...

Has its own history....



WAHED

- International day of action on inequalities in access and success in higher education day.
- 2018 – 2022
- 1000 organisations participated
- Over 100 countries.

Partners....



What will WAHEN do

- Capacity building
- Research and Advocacy
- WAHED
- Convening

World Access to Higher Education Network

WAHEN, the international network for equitable access to, and success within higher education, will be relaunched in **Autumn 2024**. Ensure you are the first to know about it by signing up to "Get updates from WAHEN".

[Get updates from WAHEN](#)



<https://worldaccesshe.com/stay-up-to-date-on-wahen/>

Or mail me:

graeme.atherton@uwl.ac.uk