



Siyaphumelela
we succeed



Cape
Peninsula
University
of Technology

Cape Peninsula University of Technology

Prof Muhammad Nakhooda

Curriculum and Academic Development

My institution has **developed annual goals** for student success by improving the following indicators for 3-year and 4-year degrees and 3-year diplomas

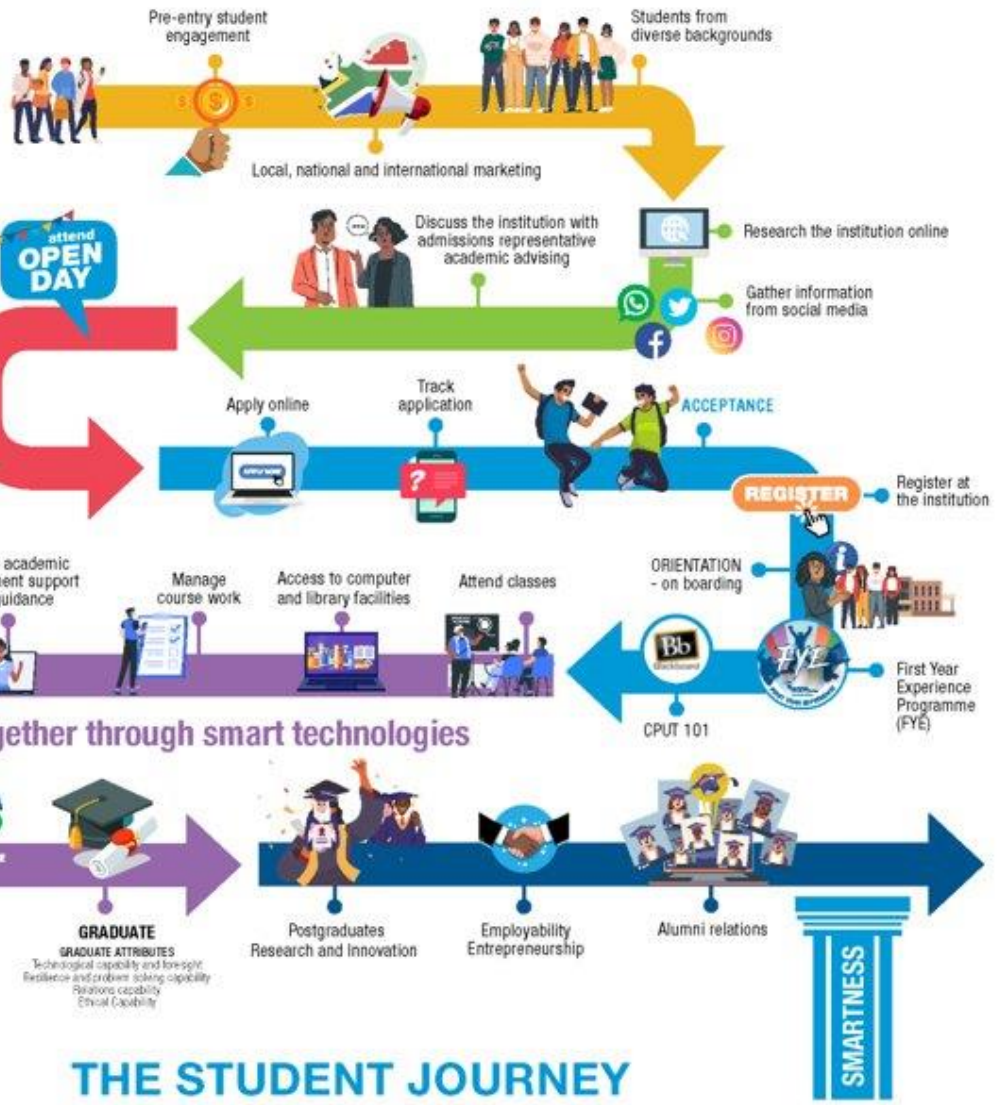


Question	Response
First year retention to second year, based on first time entering students	Neutral
Success rates of undergraduate study, defined as the completed full-time equivalents expressed as a percentage of the enrolled full-time equivalents	Agree
Qualification completion (throughput) rates within minimum times plus one or two years	Agree
Within the indicators above, my institutions has removed differences based on	Response
Race	Strongly agree
Gender	Strongly agree
School quintile	Agree

My institution has committed to the following institutional practices



Question	Response
<p>Examine institutional practices that may be inhibiting student success (topics might include, but are not limited to, admissions, financial aid, academic support, non-academic support, academic advising, first-year experience, developmental math or English, student services, etc.);</p>	Strongly agree
<p>Strengthen and integrate data analytics in institutional research, information and communications technology, academic development, planning and academic divisions;</p>	Strongly agree
<p>Commit to fully participating in activities of the network, including sharing data and experiences with other Siyaphumelela Network 2.0 partners on student success;</p>	Agree
<p>Set in motion plans to scale-up student success efforts across the university based on evaluation and other evidence of effectiveness.</p>	Strongly agree
<p>Establish a broadly representative student success or task force (if not already in-place) that meet at least one a quarter comprising representatives of institutional research, information and communications technology, academic development, student services, planning, academic divisions, students and a senior member of the university's executive team;</p>	Agree
<p>Use data analytics to review the high impact modules in which students fail, withdraw, or receive otherwise unsatisfactory grades to identify opportunities to improve student success, and implement these;</p>	Strongly agree



THE STUDENT JOURNEY

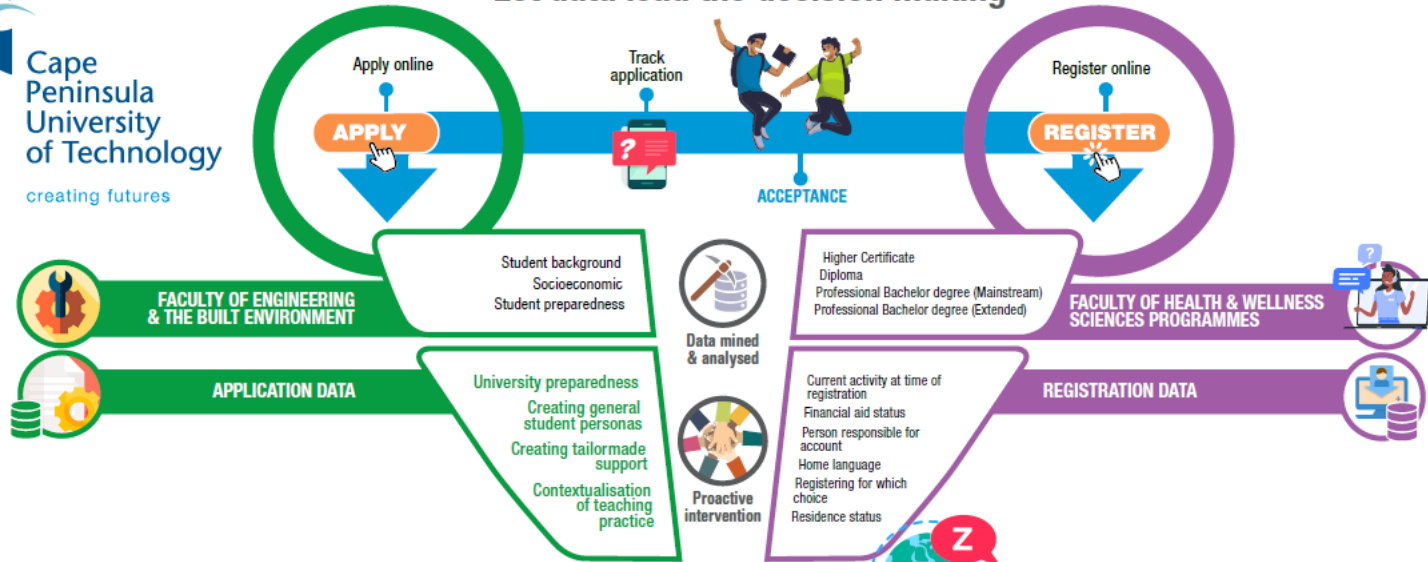


Execution of student success institutional practices

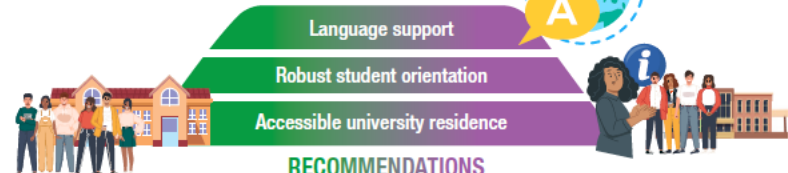


- Designed to be a highly integrated approach to the Student Success project at CPUT
 - Director T&L, Director Institutional Planning, report to Senate Committee
 - Harnessed strengths of existing initiatives (like FYE)
 - Drew in other projects with aligned objectives (such as TAU)
 - UCDG Project
 - Student Success Committee and Terms of Reference
- Use institutional data (Application and Registration data), and student survey data
- Student involvement in the data analysis (skills development)
- Predictive analytics across Faculties

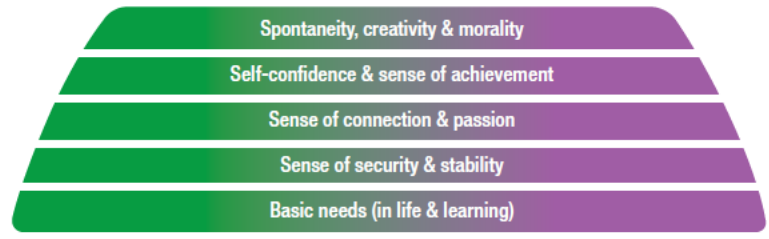
Let data lead the decision making



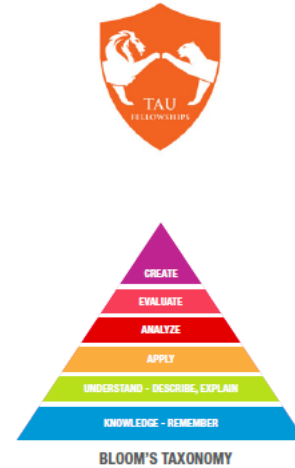
PRELIMINARY DEDUCTIONS



RECOMMENDATIONS



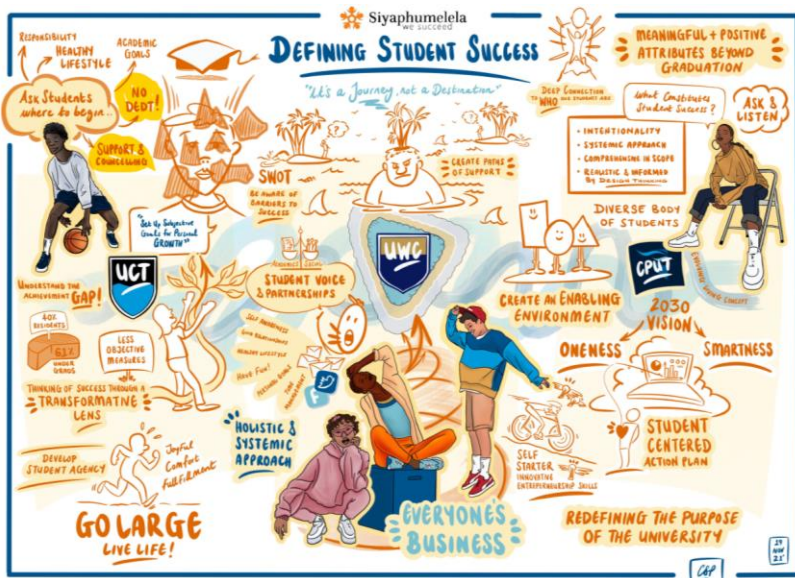
“Students have to Maslow before they can Bloom”
~Dwayne Reed



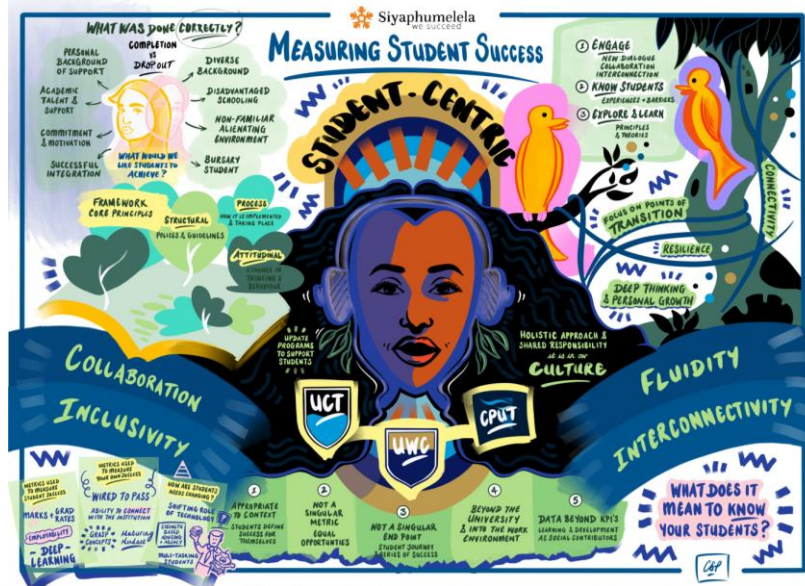
Highlights of participating in the Siyaphumelela Network 2.0 activities



- Opportunity to formally and intentionally explore institutional data
- Workshops (extended to the larger group)
- Student Success Community outside of the institution (Coach)
- Support and engagement with the Western Cape group
 - Workshops on:
 - Defining Student Success
 - Measuring Student Success
 - Factors Affecting Student Success
 - Supporting Students Along their Academic Journey
- Insights from the data projects
- Reporting and accountability



UNIVERSITY of the WESTERN CAPE



Highlights of impactful student success interventions



- Significantly clearer picture of student profile
- Willingness to explore institutional and Faculty data by HoDs and Deans
- More informed Design and Implementation of the student experience
- Greater awareness of Student Success, from interpretation to action
- Student Success insights extending from application to post-graduation

Awareness Insights Willingness